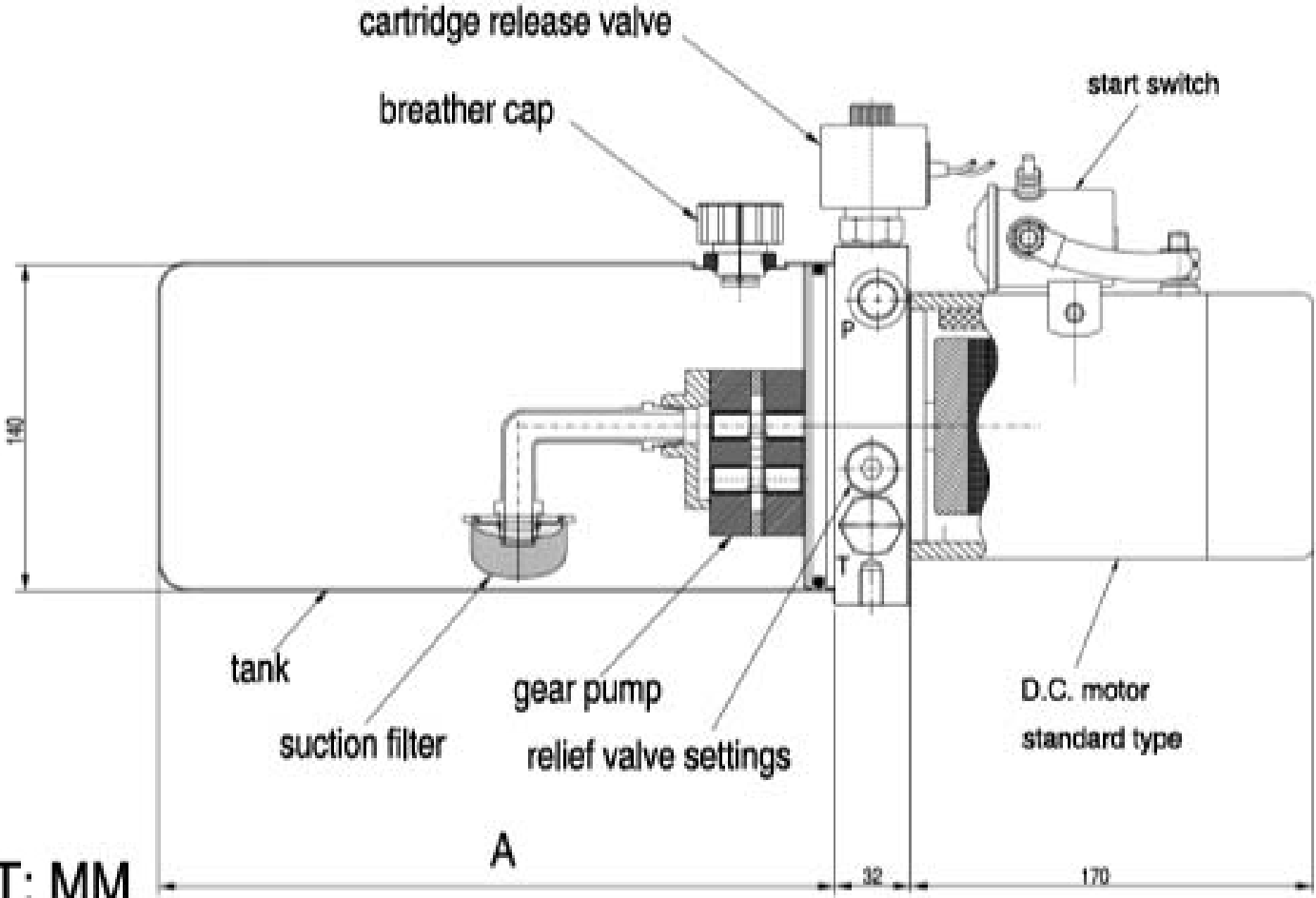
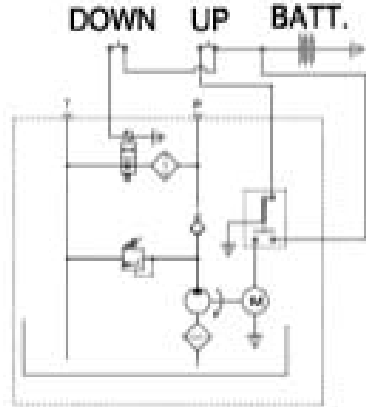


(Code No: CE12H24S15AAN YAP)



UNIT: MM

ELECTRIC AND HYDRAULIC CIRCUIT



TANK SIZE 140 MM Dia.	TANK SIZE 180 MM Dia.	LENGTH (A) MM
1.6 Liters		170
2.0 Liters	3.0 Liters	205
2.4 Liters	4.0 Liters	245
2.8 Liters	5.0 Liters	285
4.2 Liters	8.0 Liters	405

TECHNICAL DATA

- WEIGHTS:** A typical D.C. power pack with 2.4 liter tank weighs approx. 18.2 kgs when filled with oil. For larger tanks add 1 kg for each additional liter of capacity.
- HYDRAULIC OIL:** Mineral oil with a viscosity range from 6 to 450 centistokes at stabilised working temperature.
- WORKING PRESSURE:** Typical working pressures are normally around 180 bar although pressures of up to 250 bar are attainable. (Special pressure settings are available on request)

APPLICATIONS: Tailgates, concrete saws, material handling, dump bodies, cement trucks, wheelchair/personel lifts, aerial ladders, mobile hoists, cranes, portable presses. Ideal for use with remotely mounted valving and as a self-contained auxiliary power unit.